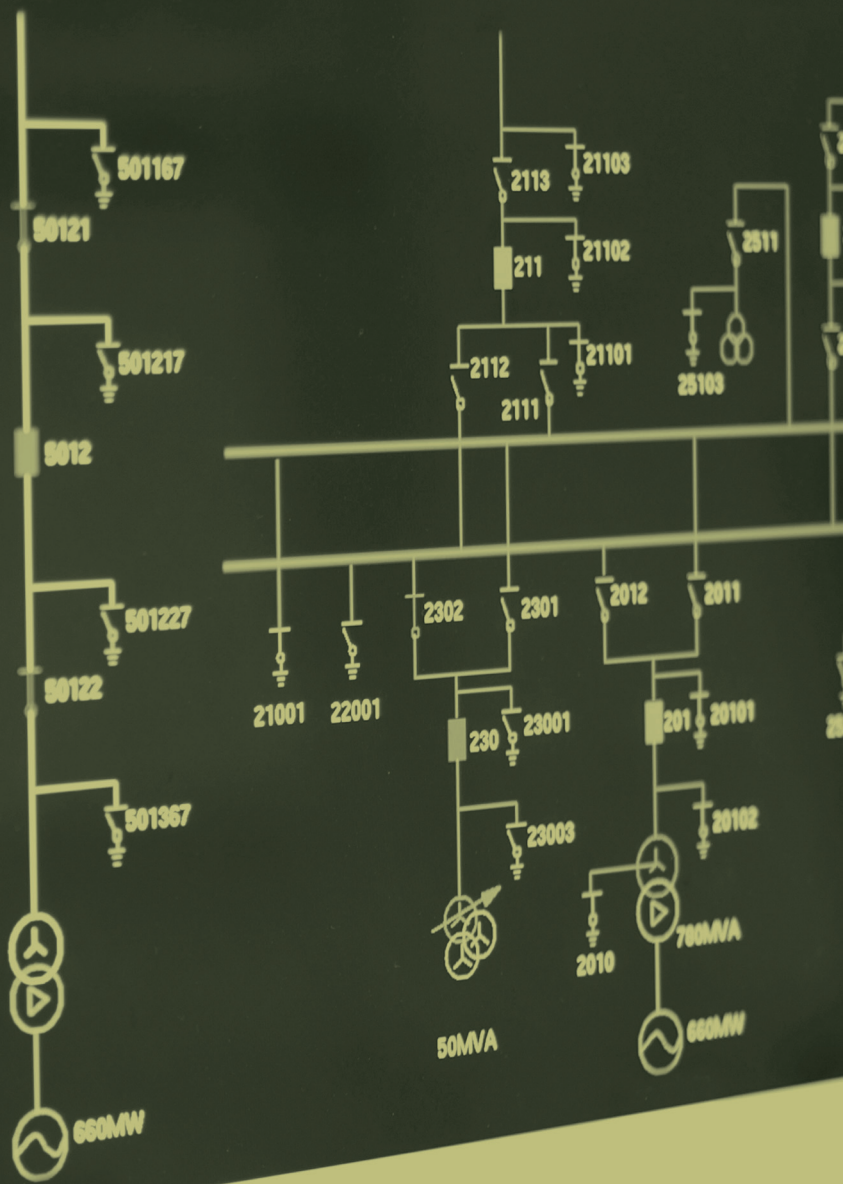


Office



Box gestionali

Questa tipologia di sedute è stata progettata per le necessità degli uffici (in particolare logistici, tecnici e di manutenzione) collocati all'interno delle aree produttive. Sono realizzate con componenti robusti ed essenziali, come richiesto da un utilizzo che risponde a criteri di praticità e funzionalità, ma con una progettazione attenta all'aspetto ergonomico e al benessere fisico dell'operatore, che in genere le adopera per diverse ore nell'arco della giornata lavorativa.

La gamma delle versioni offre soluzioni ottimali per ambienti di lavoro diversi: imbottito, pu-soft, multistrati e massello. Gli imbottiti presentano caratteristiche di particolare robustezza e durata, dovute all'impiego di schiumato ignifugo ad alta densità, e forniscono un comfort di buon livello pur essendo solidi e resistenti. Le sedute con sedile e schienale in poliuretano pu-soft o in legno di faggio multistrati o massello offrono una spiccata praticità di manutenzione e una assoluta facilità di lavaggio e pulizia.

Operational box

These chairs has been developed keeping in mind the needs of offices (logistics, engineering and maintenance among others) within production areas. They are made with sturdy and essential components, as required by a use that meets the criteria of practicality and functionality, but with careful planning of ergonomics and physical well-being of the operator, who typically use these chairs for several hours over the working day.

A range of versions offering optimal solutions for different working environments: padded, pu-soft, multilayer beech wood and solid wood. The padded line present characteristics of strength and durability, due to the use of high density and fire retardant foam, and provide a good level of comfort while being solid and sturdy at the same time. The chairs with seat and back in polyurethane pu-soft or in multilayer plywood or solid wood have a strong practicality of maintenance and trouble-free cleaning.

Per rispondere alle diverse caratteristiche degli ambienti lavorativi le sedute possono essere in imbottito, pu-soft, multistrati e massello di faggio.

In order to answer to the different characteristics of any workplace, the chairs can be padded or in pu-soft, multilayer beech wood, and solid beech wood.








PC	H 42 ÷ 55	A6 D2	VL101 S
PC	H 50 ÷ 70	A6 B2 C1 D2	VL146 HS
PC	H 60 ÷ 85	A6 B2 C1 D2	VL147 HS


PC	H 42 ÷ 55	A6 D2	ON101 S
PC	H 50 ÷ 70	A6 B2 C1 D2	ON146 HS
PC	H 60 ÷ 85	A6 B2 C1 D2	ON147 HS

Accessori - Accessories


A6  Braccioli fissi in nylon
Nylon armrests
0702

B2  Ruote gommate anziché ruote dure o pattini
Soft castors instead of hard castors or glides
M-0311

C1  Poggiapiedi cromato regolabile a manopola
Height adjustable footrest
0700

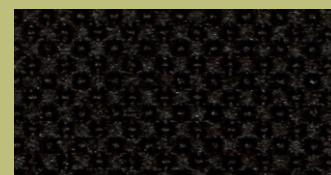
D2  Basamento alluminio lucido Ø 700 mm
Polished aluminium base Ø 700 mm
0901 C

Accessori - Accessories

D4  Basamento alluminio lucido Ø 600 mm
Polished aluminium base Ø 600 mm
0902C

Rivestimenti - Upholsteries

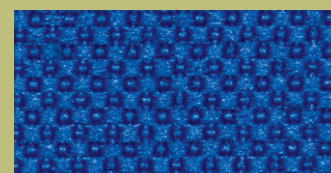
Radio  flame retardant



Nero - Black 654



Grigio - Grey 657



Blu reale - Royal blue 656



Rosso - Red 651



GS	H 42 ÷ 55	D4	KGT141
GS	H 47 ÷ 67	B2 C1 D4	• KGT143 H
GS	H 57 ÷ 82	B2 C1 D4	KGT144 H

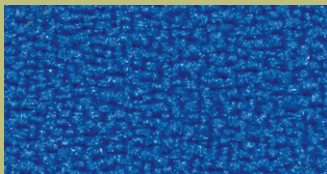
Mirage  flame retardant



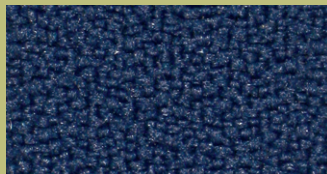
Nero - Black 724



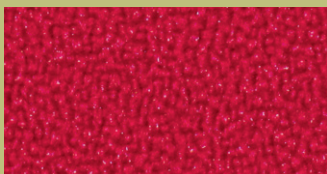
Grigio - Grey 727



Blu reale - Royal blue 726



Blu scuro - Dark blue 734



Rosso - Red 721

Meccanismi - Mechanisms



GAS LIFT
Alzata a gas
Gas lift adjustment



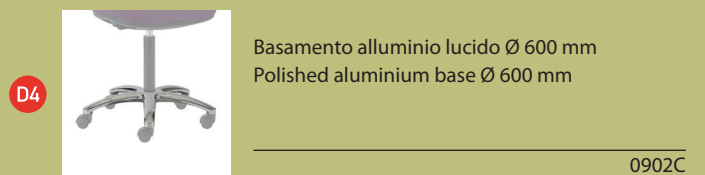
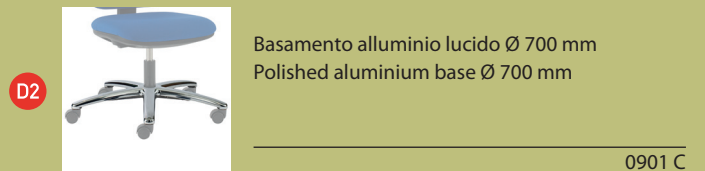
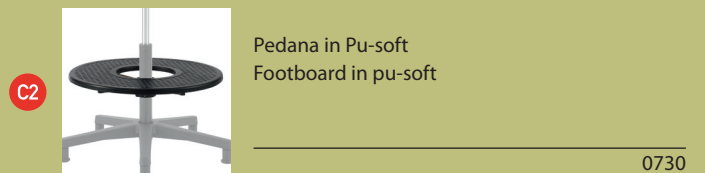
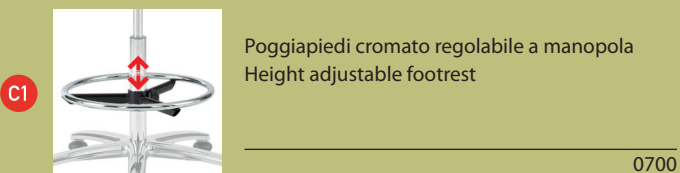
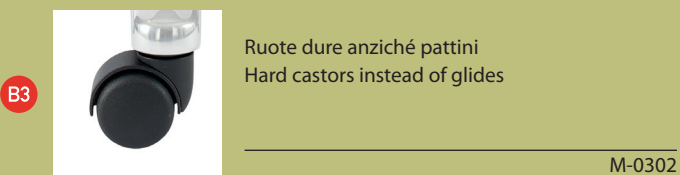
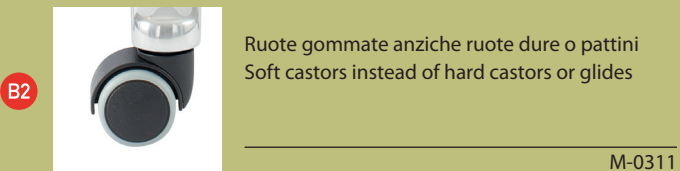
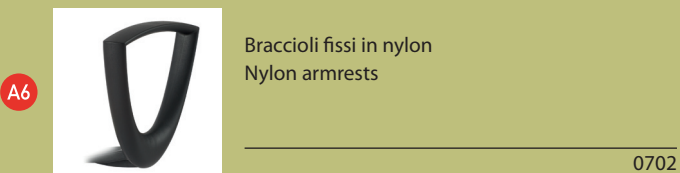
PERMANENT CONTACT
Regolazione inclinazione e altezza dello schienale.
Inclination and height adjustment of backrest.



PC	H 40 ÷ 53	A6 D2	• VL181 P
PC	H 49 ÷ 69	A6 B2 B3 C1 C2 D2	VL186 HP
PC	H 59 ÷ 84	A6 B2 B3 C1 C2 D2	VL187 HP

PC	H 40 ÷ 53	A6 D2	TL181 P
PC	H 49 ÷ 69	A6 B2 B3 C1 C2 D2	• TL186 HP
PC	H 59 ÷ 84	A6 B2 B3 C1 C2 D2	TL187 HP

Accessori - Accessories





GS	H 37 ÷ 50	D2	• VL151 F
GS	H 46 ÷ 66	B2 B3 C1 D2	VL156 HF
GS	H 56 ÷ 81	B2 B3 C1 D2	VL157 HF



GS	H 39 ÷ 52	D4	• KG141
GS	H 47 ÷ 67	B2 B3 C1 D4	KG143 H
GS	H 57 ÷ 82	B2 B3 C1 D4	KG144 H

Materiali - Materials

Pu-Soft



Nero - Black

BLK

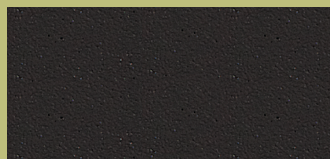
Multilayered Beech Wood



Trasparente - Natural

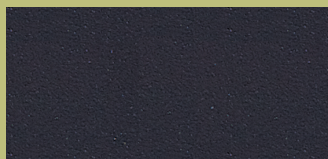
W-TR

Polypropylene Kinga



Antracite - Anthracite

DGY



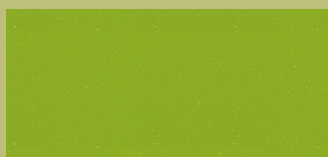
Blu scuro - Navy

BLU



Rosso - Red

RED



Verde - Green

GRN

Meccanismi - Mechanisms



GS

GAS LIFT
Alzata a gas
Gas lift adjustment



PC

PERMANENT CONTACT
Regolazione inclinazione e altezza dello schienale.
Inclination and height adjustment of backrest.